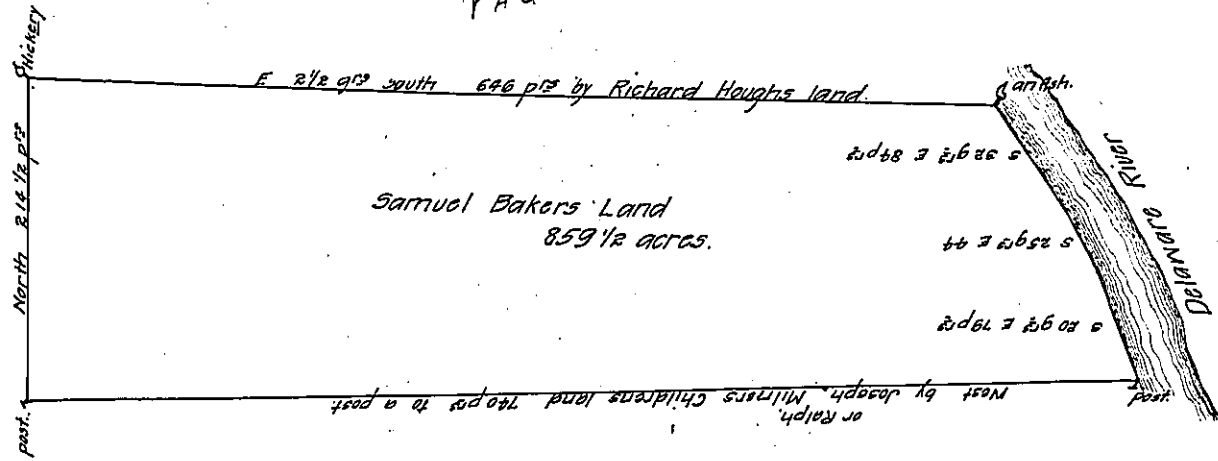


PAGE 2

by the land formerly Henry Siddals & vacant land.



Pursuant to a warrant to me directed by Edward Perinington Surveyor General dated the 13 day of the 11<sup>th</sup> month 1700; to resurvey two tracts of land lying in the Township of Makefield in the County of Bucks which said tracts are contiguous and begins at corner post standing by the River Delaware and runs thence by the lands of the Heirs of Joseph Milner or Ralph Milner <sup>west</sup> seven hundred and forty perches to a post thence by the land formerly laid out to Henry Siddal & vacant lands <sup>North</sup> two hundred and fourteen perches <sup>1/2</sup> to a Hickery Then by the land of Richard Hought east two and a half deg<sup>s</sup> south six hundred forty six perches to a small ash tree by the River Delaware Then down the courses of the river south thirty two degrees east eighty four perches Then south twenty five degrees east forty four perches Then south twenty degrees east seventy (o. b. l. i. e. r. a. t. e. d.) containing eight hundred fifty nine acres and a half. Resurveyed and certified the 3 day of the 3<sup>rd</sup> month 1701.

P Phineas Pemberton.

IN TESTIMONY that the above is a copy of the original remaining on file in the Department of Internal Affairs of Pennsylvania, made conformably to an Act of Assembly approved the 16th day of February, 1833, I have hereunto set my Hand and caused the Seal of said Department to be affixed at Harrisburg, this

twelfth day of December 1910.

*Henry Houder*  
Secretary of Internal Affairs.